

# Careers Education, Information, Advice and Guidance Policy

|                         |                                      |
|-------------------------|--------------------------------------|
| <b>Policy Owner</b>     | Trust Careers and Employability Lead |
| <b>Approved by</b>      | Education Standards                  |
| <b>Last reviewed on</b> | January 2026                         |
| <b>Next review date</b> | January 2029                         |

## Contents page

|   |   |
|---|---|
| 1. Introduction.....                            | 4 |
| 2. Policy scope.....                            | 4 |
| 3. Statutory requirements and expectations..... | 5 |
| 4. Roles and responsibilities.....              | 5 |
| 5. Funding and resourcing.....                  | 6 |
| 6. Support agencies and providers.....          | 6 |
| 7. Parents and Carers.....                      | 7 |
| 8. Monitoring, Evaluation and Reporting .....   | 7 |

|  |    |
|--|----|
| 9. Appendix 1: Gatsby benchmarks.....                              | 8  |
| 10. Appendix 2: Definitions of ‘meaningful’ encounters.....        | 9  |
| 11. Appendix 3: Careers programme by school for years 7-11/13..... | 10 |

## 1. Introduction

- 1.1 Creative Education Trust believes that all our pupils deserve the best start in life. We are ambitious for every child to become an educated, confident, active, and responsible citizen. Whether going on to university, securing an apprenticeship or entering the workplace, we want every young person who leaves a Creative Education Trust school to have real choices. That is why, as well as academic excellence, we seek to provide the best possible careers education, support, and guidance, including a range of meaningful encounters with, and experiences of, the world of work.
- 1.2 Creative Education Trust schools aim to equip all their pupils with the skills, knowledge, confidence and understanding to support their lifelong learning and career readiness.
- 1.3 This Careers, Education, Information, Advice and Guidance policy supports and is underpinned by each school’s policies for Teaching and Learning, Assessment, SEND, Behaviour for Learning, and by the Academy Development Plan.

## 2. Policy scope

- 2.1 This policy covers Careers Education, Information, Advice and Guidance given to all pupils in Creative Education Trust schools. The policy has been reviewed in line with recent guidance from the Department for Education, including the guidance document ‘Careers guidance and access for education and training providers – Statutory guidance for governing bodies, school leaders and school staff (DfE, updated May 2025).
- 2.2 This policy accepts the 8 Gatsby Benchmarks (outlined in Appendix 1) as set out in the DfE guidance.<sup>1</sup>
- 2.3 This policy covers the legal duty of schools to ensure that a range of education and training providers can access pupils in Year 7 to Year 13 for the purpose of informing them about approved technical education qualifications or apprenticeships.
- 2.4 The updated Provider Access Legislation (PAL) has been enacted. It specifies schools must provide at least six encounters with approved providers of apprenticeships and technical education for all their pupils:
  - Two encounters for pupils during the ‘first key phase’ (1st September in Year 8 until 28<sup>th</sup> February in Year 9) that are mandatory for all pupils to attend.
  - Two encounters for pupils during the ‘second key phase’ (1<sup>st</sup> September in Year 10 until 28<sup>th</sup> February in Year 11) that are mandatory for all pupils to attend.
  - Two encounters for pupils during the ‘third key phase’ (Year 12 or 13) that are mandatory for the school to put on but optional for pupils to attend.

This legislation is a key mechanism to further help pupils understand and take-up, not just apprenticeships, but wider technical education options such as T-Levels and Higher Technical Qualifications.

- 2.5 All members of staff in Creative Education Trust schools are expected to be aware of this policy and the importance of Careers Education, Information, Advice and Guidance (CEIAG) in the education of pupils. CEIAG is not the sole responsibility of the Careers Leader; every member of staff is a teacher of careers.

---

<sup>1</sup> Source: <https://www.gatsbybenchmarks.org.uk/app/uploads/2024/11/gatsby-summary-for-leaders-schools.pdf>

2.6 It is important for pupils to leave Creative Education Trust schools aware of themselves, what they enjoy and what they're good at. They should be aware of the full range opportunities available to them after school and feel a good sense of career readiness. This means they can cope with the transitions from education to work and between roles, as well as being equipped to make good decisions.

### 3. Statutory requirements and expectations

3.1 Creative Education Trust schools are committed to fulfilling their statutory duties in relation to CEIAG. Statutory duties include:

- All registered pupils at the school must receive impartial careers guidance in Years 7-13 which meets national guidelines for good practice, preparing pupils for their futures.
- Schools must secure the services of a Level 6 qualified Careers Guidance Professional who should be a Registered Careers Development Professional (RCDP) with the Career Development Institute (CDI).
- Careers advice must be represented in an impartial manner, showing no bias towards a particular route.
- Guidance must be in the best interests of each pupil and must meet each pupil's individual needs.
- Schools must provide opportunities for a range of education and training providers to access pupils in years 7-13 to inform them about approved technical education qualifications and apprenticeships. Our schools will comply with the legal requirement to put on at least six encounters (two per Key Stage) with providers of approved technical education qualifications or apprenticeships, including:
  - Two encounters for pupils during years 8-9 that are mandatory for all pupils to attend.
  - Two encounters for pupils during years 10 or 11 that are mandatory for all pupils to attend.
  - Two encounters for pupils during years 12 or 13 that are mandatory for the school to put on but optional for pupils to attend.
- All schools must have a clear policy setting out the manner in which providers will be given access to pupils (Please see Provider Access Policy Statement).
- Schools must publish information on their careers programme and Provider Access Policy on their website.
- Schools should include their plans for engagement with parents and carers as part of the careers programme offered to all pupils.
- The careers programme must raise aspirations, challenge stereotypes, and support social mobility by improving opportunities for young people.

3.2 Creative Education Trust schools will continuously monitor their Careers Education, Information, Advice and Guidance offer and seek further improvement, as outlined under 'Monitoring, Evaluation, and Reporting'.

3.3 Creative Education Trust schools will ensure that all CEIAG-related data, including destinations data and information gathered through encounters, is collected and processed in line with data-protection legislation and the school's Data Protection Policy.

3.4 Creative Education Trust schools will ensure that their Careers Education Information Advice and Guidance offer meet the expectations set out in the Ofsted Education Inspection Framework (DfE, November 2025). This includes:

- supporting pupils' readiness for the next phase of education, training or employment so that they are equipped to make the transition successfully, including by providing impartial careers information, education, advice and guidance for secondary-age pupils.

3.4 In the Personal Development judgement area, the Ofsted Framework states:

In gathering evidence about careers education, inspectors consider the extent to which:

- leaders ensure that all secondary-age pupils are well prepared and supported to progress in education, employment or training, including continuing in education or training until at least their 18th birthday.
- where relevant, there is an appropriate careers programme that meets the Gatsby Benchmarks and includes impartial advice and guidance from a qualified careers adviser, opportunities for

workplace experiences, and engagement with employers, colleges, training providers and universities

- secondary-age pupils have an appropriate understanding of relevant trends in local and national employment and the implications of the choices they make in relation to these
- pupils with SEND develop independence, contribute to their community, make positive friendships and are supported to be as healthy as possible.

#### **4. Roles and Responsibilities**

- 4.1 Weavers Academy's senior leadership team is responsible for ensuring that careers and employability education has an uncompromised profile in the curriculum, and that the school's careers leader, who has accessed Level 6 Careers Leadership training, is enabled and resourced to meet the statutory requirements for CEIAG.
- 4.2 Weavers Academy's careers leader is responsible for the school's strategy for meeting the objectives and statutory duties outlined above, the delivery of the careers programme across every year group, and the evaluation of the programme using Compass+ and the Careers Impact System/Maturity Model. The careers leader will ensure that the school's careers programme:
- Is measured using the eight Gatsby Benchmarks
  - Meets current statutory guidance.
- 4.3 Weavers Academy also employs a career advisor, trained to at least Level 6, who provides impartial personal guidance to pupils in areas such as labour market information, career pathways, progression routes, developing goals and making decisions.
- 4.4 The school's Academy Council is responsible for supporting careers as a strategic priority in the Academy Development Plan. They should also assist schools to access local business networks and employers. This role is intended to ensure that arrangements are in place to allow a full range of educational and training providers to access pupils in Years 7 – 13.
- 4.5 The careers lead will report to the Academy Council annually on progress towards meeting the full requirements of the Gatsby Benchmarks, the school's compliance with Provider Access Legislation, and the outcomes of the Careers Maturity Model evaluations (made up of the FSQ, Compass+ and ILR data).
- 4.6 Careers and Employability is one of the 7 components of the CET Personal Development Framework focussed on equipping students with the skills, knowledge, and mindset necessary for success in the workplace. This Framework enables the development of oracy and communication, critical thinking, emotional literacy and self-regulation as well as providing character education and enrichment experiences. Within the careers and employability strand of the Framework students are prepared for the demands of the modern work environment, fostering confidence and competence as they transition from education to employment.

#### **5. Funding and resourcing**

- 5.1 Funding for CEIAG, sufficient to deliver the list of requirements above, is allocated in every Creative Education school's budget. Creative Education Trust schools are encouraged to explore additional sources of external funding or services in kind from local businesses and employers.
- 5.2 Where potential economies of scale are realised in procuring external provision on behalf of several schools, the Trust Lead for Careers and Employability within the Safeguarding and Personal Development Directorate negotiates contracts and quality assesses the performance of external providers using evaluation data supplied by each school's Careers Leader or Adviser.

#### **6. Support agencies and providers**

- 6.1 On behalf of its member schools, Creative Education Trust has an annual agreement with Unifrog, a careers education platform providing universal careers education and information for all pupils in Years 7-

13. Schools are expected to make full use of this subscription to ensure that it is of benefit to pupils and used to support their career decisions.

6.2 All schools in Creative Education Trust are members of their local Careers Hub, administered by the Careers and Enterprise Company, and through this access the support of Enterprise Coordinators and business volunteers when developing the programme of career development work in school.

6.3 In addition, Creative Education Trust has a Memorandum of Understanding with the Careers and Enterprise Company's Community of Interest for Multi-academy Trusts which recognises our commitment to working in partnership with the CEC.

## **7. Parents and Carers**

7.1 Creative Education Trust recognises the important role that parents and carers have in their child's career development. The school's career development programme must include a section that sets out how and when parents and carers will be engaged, as per Gatsby Benchmark 1.

7.2 The arrangements for personal guidance and support, including information on how to access these, will be communicated to parents and carers so that they can best support their children.

7.3 When evaluating the whole school careers programme, the views of parents and carers will be sought, alongside the views of pupils and other stakeholders.

## **8. Monitoring, Evaluation and Reporting**

8.1 The implementation of the careers programme will be monitored by the Trust Lead for Careers and Employability, and the Directors of Creative Education Trust through their line management of senior school leaders.

8.2 The careers leader in each school will complete the Compass+ assessment with their named CEC Enterprise Coordinator (or Careers Consultant in some areas) at the end of each academic term.

8.3 Creative Education Trust has an agreement in place with the Careers and Enterprise Company (CEC) committing all secondary schools to conduct an annual Internal Leadership Review (ILR) and to administer the Future Skills Questionnaire (FSQ) to all year groups annually. This is a formal commitment to ensure all pupils in Years 7-13 are asked to complete the Future Skills Questionnaire annually, and all staff responsible for elements of the careers programme in school participate in the Internal Leadership Review as part of the Careers Maturity Model. This should include the careers lead, the relevant member of the Senior Leadership Team, other relevant staff such as a work experience coordinator or careers adviser, and the Trust Lead for Careers and Employability. The Careers Leader and their line manager can also take the opportunity to take part in a peer-to-peer review facilitated by their local Careers Hub once every 3 years.

8.4 The outcomes of the ILR and FSQ will be recorded in the CEC's MAT Dashboard and reported to the Education Standards Committee by the Trust Lead for Careers and Employability annually in April.

8.5 Creative Education Trust and its schools will collect, store, process and share destinations data (including intended and actual post-16 and post-18 destinations) in line with UK GDPR and the Data Protection Act 2018. Destinations data will only be used for legitimate educational purposes, including statutory reporting, tracking pupil outcomes, and improving CEIAG provision.

All data will be stored securely, access will be restricted to authorised personnel, and data-sharing with third-party platforms such as Unifrog and the Careers & Enterprise Company will be governed by appropriate Data Processing Agreements.

Pupils and parents/carers will be informed of how this data is used through the school's Privacy Notice.

8.6 In addition, the school Headteacher/Principal will ensure that:

- The work of the Careers Advisor and CEIAG events are supported and monitored by the Senior Leadership Team.
- A member of the Senior Leadership Team has an overview of CEIAG work and reports regularly back to the wider SLT.
- The effectiveness of this policy will be measured in a variety of ways:
  - Feedback from stakeholders through mechanisms such as pupil and parent surveys
  - Feedback from external visitors to the school such as Ofsted
  - The number of pupils who are NEET in October having left the school in the previous summer. This figure can be compared to national figures as well as against the equivalent figure from similar schools both nationally and within the county.

## 9. Appendix 1

| <b>Benchmark</b>   | <b>Summary</b>  |
|--|---|
| <b>1. A stable careers programme</b>                         | Every school should have an embedded programme of careers education and guidance that is known and understood by pupils, parents and carers, staff, governors, employers and other agencies.  |
| <b>2. Learning from career and labour market information</b> | All pupils, parents and carers, teachers and staff who support pupils should have access to good-quality, up-to-date information about future pathways, study options and labour market opportunities. Young people with special educational needs and disabilities (SEND) and their parents and carers may require different or additional information. All pupils will need the support of an informed adviser to make the best use of available information. |
| <b>3. Addressing the needs of each young person</b>          | Pupils have different careers guidance needs at different stages. Careers programmes should help pupils navigate their concerns about any barriers to career progression. In addition, opportunities should be tailored to the needs of each pupil, including any additional needs of vulnerable and disadvantaged pupils, young people with SEND and those who are absent.   |
| <b>4. Linking curriculum learning to careers</b>             | As part of the school's programme of careers education, all teachers should link curriculum learning with careers. Subject teachers should highlight the progression routes for their subject and the relevance of the knowledge and skills developed in their subject for a wide range of career pathways.   |
| <b>5. Encounters with employers and employees</b>            | Every pupil should have multiple opportunities to learn from employers about work, employment and the skills that are valued in the workplace. This can be through a range of enrichment opportunities, including visiting speakers, mentoring and enterprise schemes, and could include pupils' own part-time employment where it exists.  |
| <b>6. Experiences of workplaces</b>                          | Every pupil should have first-hand experiences of workplaces to help their exploration of career opportunities and expand their networks.   |
| <b>7. Encounters with further and higher education</b>       | All pupils should understand the full range of learning opportunities that are available to them, including academic, technical and vocational routes. This should incorporate learning in schools, colleges, independent training providers (ITPs), universities and in the workplace.   |
| <b>8. Personal guidance</b>                                  | Every pupil should have opportunities for guidance meetings with a careers adviser, who could be internal (a member of school staff) or external, provided they are trained to an appropriate level. These meetings should be available for all pupils whenever significant study or career choices are being made. They should be  |

|  |  |
|--|--|
|  | expected for all pupils but should be scheduled to meet their individual needs. The careers leader should work closely with the careers adviser, SEND coordinator (SENDCO) and other key staff to ensure personal guidance is effective and embedded in the careers programme. |
|--|--|

## 10. Appendix 2

The definitions of a 'meaningful encounter' are described here according to each of Benchmarks 5, 6 and 7.

### **Benchmark 5:** Encounters with employers and employees

Every year, from the age of 11, pupils should participate in at least one meaningful encounter with an employer. A 'meaningful' encounter is one in which the student has an opportunity to learn about what work is like or what it takes to be successful in the workplace.

A meaningful encounter will:

- have a clear purpose, which is shared with the employer and the young person.
- be underpinned by learning outcomes that are appropriate to the needs of the young person.
- have opportunities for two-way interactions between the young person and the employer.
- be followed by time for the young person to reflect on the insights, knowledge or skills gained through the encounter.

### **Benchmark 6:** Experiences of workplaces

By the age of 16, every pupil should have had meaningful experiences of workplaces. By the age of 18, every pupil should have had at least one further meaningful experience.

A meaningful experience will:

- have a clear purpose, which is shared with the employer and the young person.
- be underpinned by learning outcomes that are appropriate to the needs of the young person.
- involve extensive two-way interactions between the young person and employees.
- include opportunities for young people to meet a range of different people from the workplace.
- include opportunities for young people to perform a task set by the employer or to produce a piece of work relevant to that workplace.
- include the employer providing feedback to the young person about their work.
- be followed by opportunities for the young person to reflect on the insights, knowledge or skills gained through their experience.
- Schools can consider any part-time work a young person may have, if it genuinely offers them a meaningful experience.

### **Benchmark 7:** Encounters with further and higher education

By the age of 16, every pupil should have had a meaningful encounter with providers of the full range of learning opportunities, including sixth forms, colleges, universities, and apprenticeship providers. This should include the opportunity to meet both staff and pupils.

By the age of 18, all pupils who are considering applying for university should have had at least two visits to universities to meet staff and pupils.

Young people and providers should be supported to prepare for the encounter. Additional or different support may be needed for vulnerable and disadvantaged young people and for young people with special educational needs and disabilities (SEND).

A meaningful encounter will:

- have a clear purpose, which is shared with the provider and the young person.

- be underpinned by learning outcomes that are appropriate to the needs of the young person.
- involve a two-way interaction between the young person and the provider.
- include information about the provider, such as their recruitment and selection processes, the qualifications that provider offers and the careers these could lead to
- describe what learning or training with the provider is like
- be followed by opportunities for the young person to reflect on the insights, knowledge or skills gained through the encounter.

# Careers Programme Overview

## Academic Year 2024/2025

### Weavers Academy

#### Vision Statement

"Striving for success, Learning with PRIDE" Students at Weavers Academy will leave us ready for the world of work, with the employability characteristics of leadership, teamwork, high aspirations, positive thinking, creativity, problem solving, speaking and listening embedded into their learning.

### Milestones and Learning Outcomes

#### Year 13

Students will leave school, feeling secure in their knowledge of how to enter higher education, gain meaningful employment and how to be a member of the workforce.

Students will feel confident on how to apply and secure employment in the future and the networks to do so.

#### Year 12

Students will have the opportunity to understand the importance of networking and will investigate career paths related to their subjects and interests.

Students will confidently be able to prepare a letter of application, a personal statement and be able to approach an employer and appreciate the benefits of work experience and volunteering.

#### Year 11

Students will have confidence in understanding the range or training providers available to them and the range of academic and technical qualifications that they can access.

Students will feel confident with their next steps and understand the importance of not becoming NEET.

#### Year 10

Students will explore specific work-related skills, further considering and exploring their future potential careers pathways and will experience the world of work in a real setting.

Students will receive information on CVs, approaching an employer and expectations of the workplace.

#### Year 9

Students will be provided with relevant information to prepare them to make informed choices about their GCSE options and beyond.

#### Year 8

To develop awareness of careers, including information about LMI and how careers link to the curriculum.

#### Year 7

To introduce all students to the wide range of careers and pathways available and to build confidence in using software to develop their understanding.

### Key Events and Experiences

#### Year 13

Students will secure their places in Higher Education, Apprenticeships and employment, supported throughout the UCAS process and application processes for employment.

Training provider optional encounter.

#### Year 12

Students will have the opportunity to access at least one work experience placement.

Meaningful employer encounters and optional training provider encounters.

UCAS fair visit.  
CV workshop.  
1:1 guidance.

#### Year 11

All students will have access to 1:1 CEIAG impartial and independent guidance.

Students will be supported through their "next steps" programme to apply to their next FE destination or apprenticeship.

Training provider encounters and encouraged to go to FE college open days.

#### Year 10

Students will be encouraged to take work experience for up to one week in the summer term.

Students will approach an employer and understand expectations of the workplace.

Training provider encounter.

#### Year 9

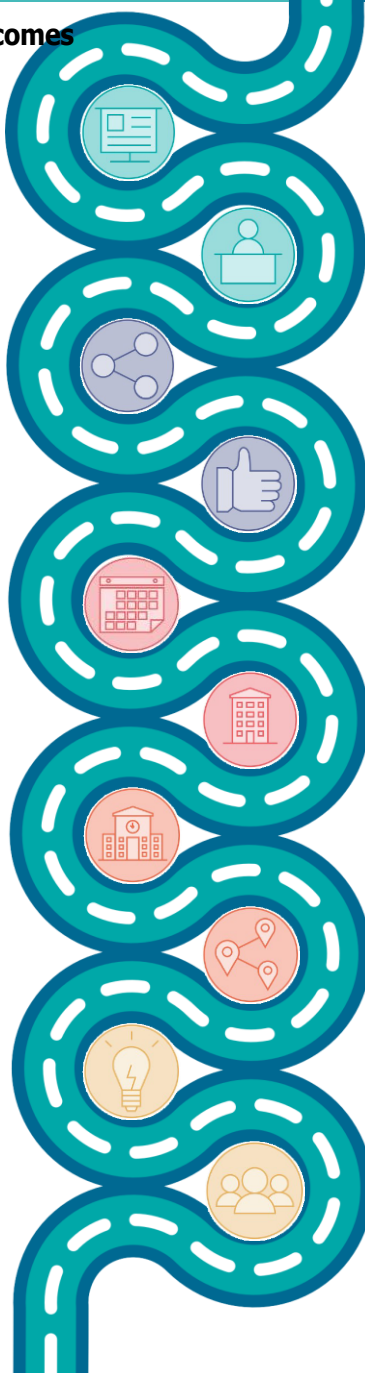
GCSE guided choices evening.  
Training provider assembly.

#### Year 8

Introduction to LMI.  
Employer encounters.  
Training provider encounters.

#### Year 7

Introduction to Unifrog.  
What is an Entrepreneur?  
Introduction to Employability skills





*Creative  
Education  
Trust*