

STRIVING FOR SUCCESS, FOCUSING ON LEARNING

Welcome Back!



Covid-19 Risk Assessment: Expectations and Safety

...Are you safe to attend?

If you have any of the following symptoms please **DO NOT ATTEND SCHOOL.**

Please **RETURN HOME** if you or anyone in your household has any of these symptoms:



New and continuous cough



High temperature

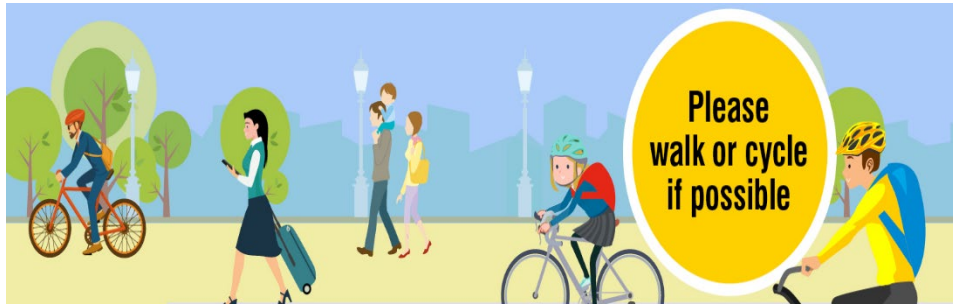


Loss or change in sense of taste or smell



How you are planning to travel to school?

... if at all possible, arrive by bicycle or walk...



...if you are walking, **maintain social distancing** on your way to and from school...

...please avoid using public transport, **particularly** at peak times



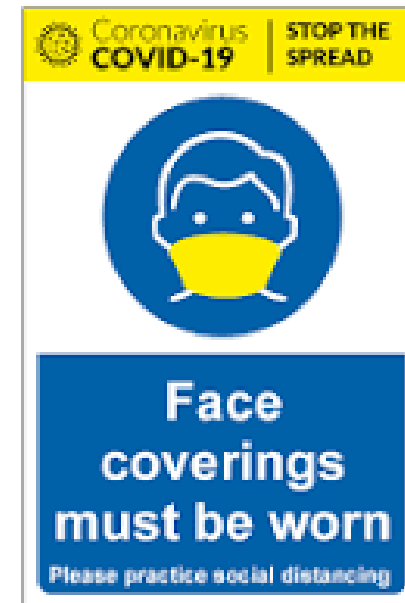
School Transport:

Use sanitizer when boarding and leaving the school bus/minibus (you will need to bring your own if you are travelling on the school bus, it will be provided on the minibus)

Maintain social distancing and avoid mixing between year groups at your pick-up point.

Face coverings will need to be worn by all passengers and staff during journeys to and from school – you will need provide your own re-usable or disposable face covering.

Face coverings must be removed when you arrive at school. You must not touch the front of the face covering when removing it. Dispose of temporary face coverings in the bin provided or place the re-usable face covering in a plastic bag to take home. Then sanitize your hands again.



You must adhere to the measures in place to ensure good hand hygiene.

Have you washed your hands?

Remember to do this ...

- After going to the toilet
- After break and PE
- Before you leave the house
- When you get to school
- Before you eat



Have you washed your hands?



...you must **keep those hands clean**, sanitise them every time you leave the classroom and return to the classroom too . . .



...Catch it, Bin it, Kill it... You must adhere to the measures in place to ensure good respiratory hygiene.

Use a tissue...



dispose of tissues immediately in a bin with a lid as soon as you use them...

...clean hands immediately...



... and if you don't have a tissue, you must catch all coughs and sneezes into the crook of your arm...



Equipment can't be shared, so...

You must bring the following items each day:

Pencil case

2 x pencils

2x pens (black or blue)

Sharpener

Rubber

Ruler

Scientific calculator.



You will need **a school bag that is large enough to carry A4 folders** and exercise books.



You will be arriving and leaving via...

Weavers Road - Gate 4...



or Brick Hill Road - Gate 5.



We have staggered starts and finish times to the day and you have been allocated different entry and exit points to make sure that you do not mix and can socially distance. Make sure you know what gate you must arrive and leave by.



Each Year Group will be based in a separate 'Year Group Bubble Zone' as follows...

- **Year 7:** In the Maths Block (M16, 17, 18 and 19) and Languages Area

- **Year 8:** In the English Block (1st Floor and E01)

- **Year 9:** In The Maths Block (Ground floor and M10, 11 ,12 ,13 ,14 ,15)

- **Year 10:** In the Humanities block (1st and 2nd floor)

- **Year 11:** In the Science Block

- **Years 12-13:** Based in the Science block with rooms in various other areas of the school.

...students will only leave their Year Group Bubble Zones at break (when they will go to their allocated Court), or the Canteen...

...or to attend their 'specialist subjects' – for example art and PE.

These times have been carefully timetabled to make sure students do not come into contact with other Year Group Bubbles.



...Start/Finish Times and Entry Exit points for each year group...

Year 7	8:30 - 2:40 pm Gate 5
Year 8	8:45 - 2:55pm Gate 4
Year 9	9:00 - 3:10pm Gate 4
Year 10	8:30 - 2:40pm Gate 4
Year 11	8:45 - 2:55pm Gate 5
6th Form	9:00 - 3:10pm Gate 5



You must keep your distance!

...students must
avoid physical
contact and observe
social distancing
measures



...you will be expected to observe the signs around the school which indicate how to get to various areas. Follow the signage at all times. Transitory passing e.g. passing each other on the way to the toilet or to move through the corridor is acceptable.



Expectations for Behaviour:

We expect all students to follow the school's behaviour for learning policy C-19 addendum and the revised behaviour management procedures at all times.

Seating plans in the classrooms are non-negotiable. You must stick to the seating plan.

You must not move tables or chairs and you must not leave your seats without requesting permission from an adult first.



Additionally - Be Aware!

There must be no coughing or spitting at or towards any other person.

You must not mix or move between Year Bubbles or 'bubble zones'



These actions will be taken very seriously and sanctioned as such



Expectations for Behaviour:

There also **can't be any physical contact** – we've all missed each other but we just can't do this...

It's also really important that you **don't share belongings** – food, drinks, equipment too...

Students who don't follow the expectations for behaviour will be sanctioned ..

In the most serious cases, the police may be informed of a student's actions where this results in potential harm to self or others.



...if students need to use the toilet...

They have been allocated a toilet within their Year Bubble Zone

Students need to make sure that they close the lid of the toilet when flushing and that they wash their hands properly.



Students follow the one way system down to the toilets – maintaining social distancing **one in, one out**



... and make sure to remember...

Have you washed your hands?



...before you return to class...



...we will need to run emergency evacuation procedures as usual – just in case...



...leave calmly, follow the lead of your teacher

...leave via the nearest exit and onto the field and maintain social distancing where possible once out of the building...head to the courts...



...when it's time to leave...

Year 7 – 2:40 pm Gate 5

Year 8 2:55pm Gate 4

Year 9 3:10pm Gate 4

Year 10 2:40pm Gate 4

Year 11 2:55pm Gate 5

Sixth Form – 3:10pm Gate 5



Do you need more support?

This has been a very unusual time for all of us – our tutorial programme has been designed to help us all get back into the swing of being together again...

If you are struggling and feel you need some extra support please talk to your form tutor, pastoral manager or any trusted teacher – we are here to help..

But please remember that you are expected to uphold these control measures at all times and to behave in line with the school's expectations.

